

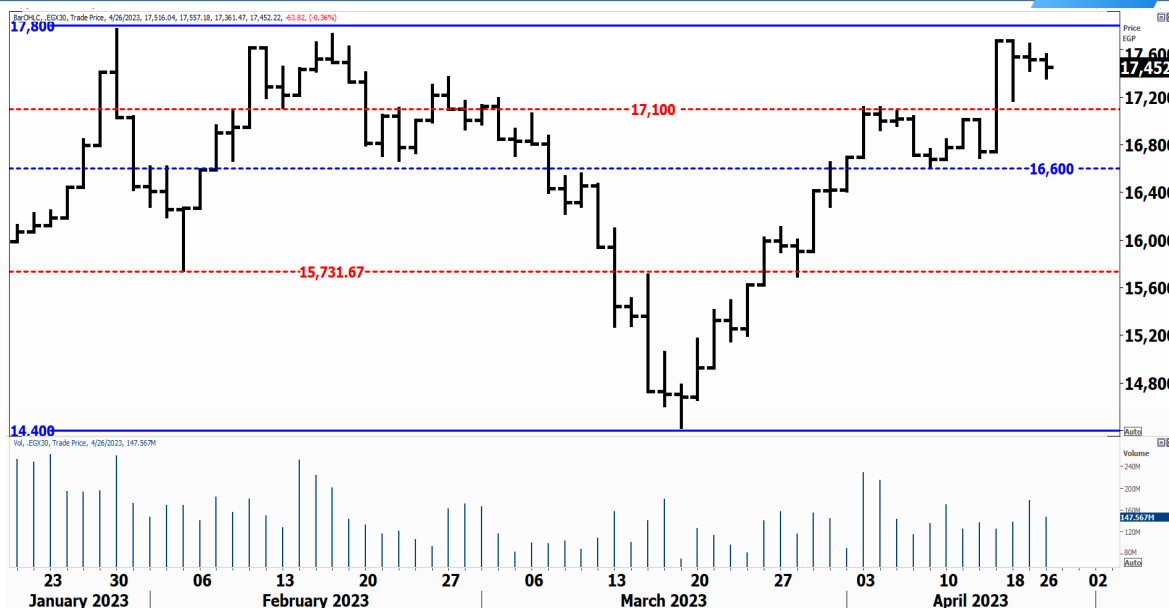


PIONEERSECURITIES

# TECH TO THE POINT

27-Apr- 2023

This report must be read with the disclaimer  
on the last page



Last	17,452.22
High Today	17,557.65
Low Today	17,361.47
Volume	M 147.567
First Support	17,100
Second Support	16,600
First Resistance	17,700
Second Resistance	18,400
Stop Loss	

## HISTORICAL RETURN %

1 WEEK	2.06%
1 MONTH	0.57%
1 QUARTER	29.14%
1 YEAR	51.86%
YTD	17.29%

## Analysis

Stops can be placed below 17,000; a break below this level will lead the EGX to 16,600 which is a more important support to watch. It is worth mentioning that the ability to maintain the index value near this area is a positive signal for the market as it heightens the probability of an upward breakout above 17,700.

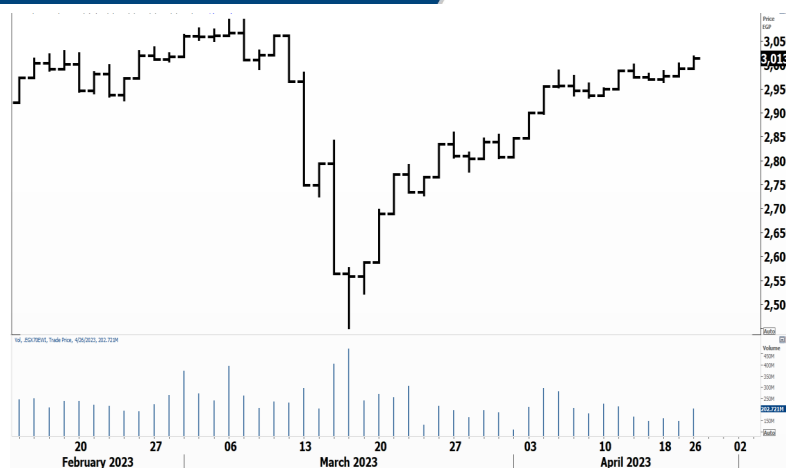
Those who want to step in with a stop below 17,000 initially can do so and add at the breakout.

## EGX Small Caps Index/ EGX 70


## Analysis


The breakout above 3,000, if confirmed, will probably lead the EGX 70 index to new highs. Today is an important session to watch as it will probably confirm the 3,000 breakout.

The 2,900 level can be used as a minor stop.



## Resistance

**SKPC**  Confirmed the breakout above 21.8 and closed near 23. SKPC also broke above its historical high that lies at 22.75. Today the stock will enjoy hitting new historical highs which will send it to much higher levels.

**AUTO**  The breakout above 5.65 is an important signal that hints of a potential major breakout above 6. AUTO is expected to hit 8, followed by 10.


## Support


No stocks broke their support yesterday


## Testing


### Support

### Resistance

**FWRY**  A break above 5.85 will trigger an entry signal with a target at 6.5. Those who want to step in are recommended to buy at this breakout as a strong rise will probably follow. We expect this breakout to take place today.

**ABUK**  The 48 breakout is already a buy signal and should lead the stock to much higher levels. This confirmed breakout heightens the probability of a clear break above 51. We expect this breakout to occur very soon so we recommend buying here with a stop below 43.5.

**ORHD**  If the stock rises today, investors can step in with a minimum target at 10 and a stop below 8.6 or below 8.25 depending on each one's risk tolerance.

**EGCH**  The 8-8.1 area is a major resistance for the stock. On the other hand, we can find a support at 7.3. If EGCH breaks above 8, a new entry signal will be triggered with a target at 9.

Symbol	S. Description	Last	Buying Area 1	Buying Area 2	Selling Area 1	Selling Area 2	Selling Area 3	Stop Loss
--------	----------------	------	---------------	---------------	----------------	----------------	----------------	-----------

*N.B. please note that the levels are too close as these trading opportunities only suit T+0 speculators*

*The prices that are accompanied by a green arrow in the above table show resistance levels. Thus, a break above these levels will pave the way to achieve one (or all) of the targets.*

*The area between buying area 1 and buying area 2 is a trading area.*

#### Yesterday's T+0/T+1 Trades

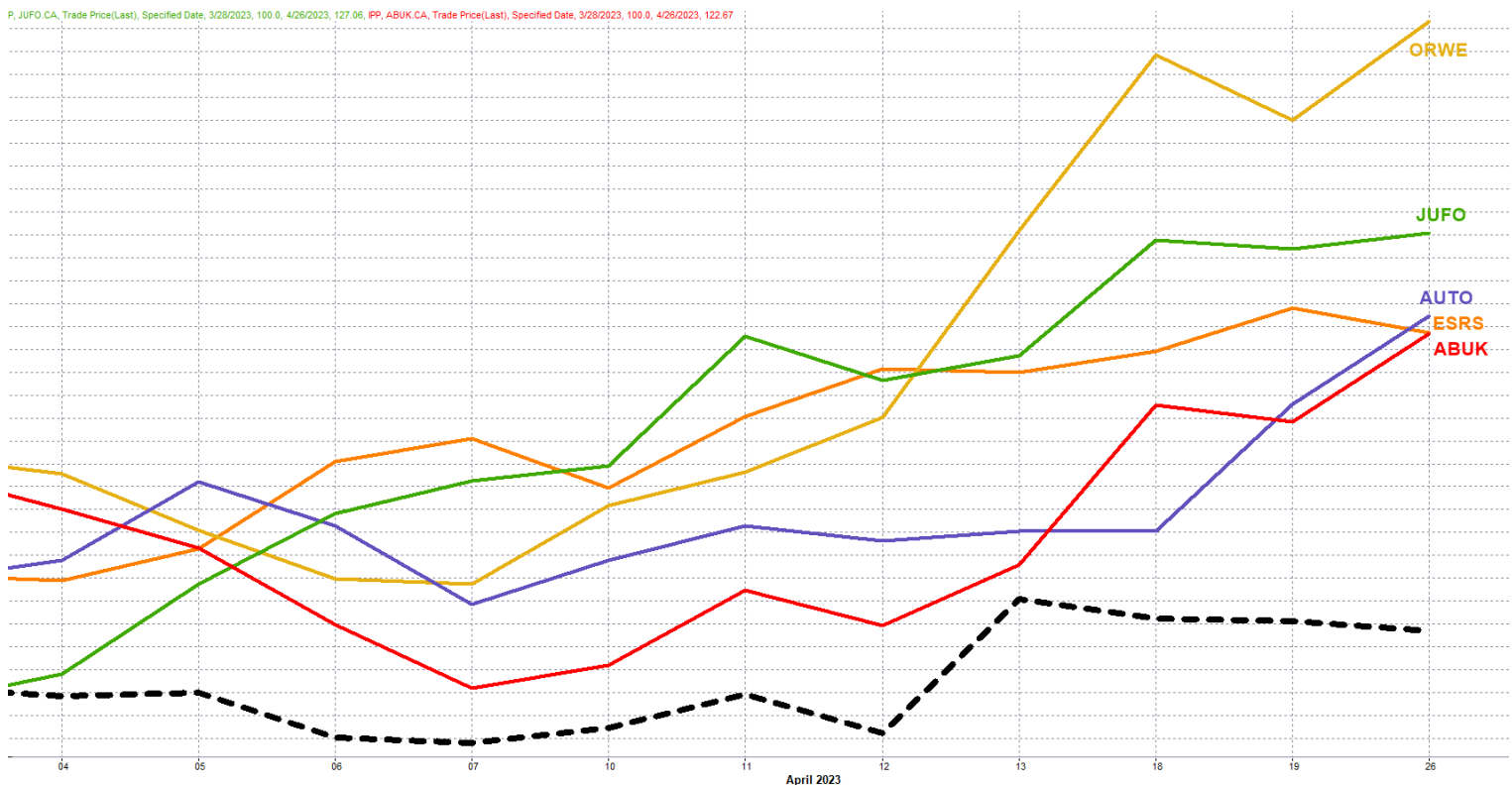


Symbol	Hit first Target	Hit Second Target	Hit Third Target	Hit Stop Loss	Triggered Buy	No Action

#### Top 5 Performers

#### EGX 30 Stocks; Past 2 Weeks

P, JUFO CA, Trade Price(Last), Specified Date, 3/28/2023, 100.0, 4/26/2023, 127.06, IPP, ABUK CA, Trade Price(Last), Specified Date, 3/28/2023, 100.0, 4/26/2023, 122.67



Symbol	S. Description	Last	Support 1	Support 2	Resistance 1	Resistance 2	Trend	Recommendation	Stop Loss/ Re-Entry
COMI.CA	COM INTL BK/d	52.4	51.3	49	55	58.5	↔	Hold	58.5
EFIH.CA	E-FINANCE FOR DIGITAL&FINANCIAL INVESTEMENT	18.65	18.1	17	19.4	20.5	↑	Hold	17
EAST.CA	EASTERN CO/d	17.35	16.4	15.5	18	18.9	↔	Hold	15.5
EKHO.CA	EGYPT KUWAIT H/d	1.14	\$1.11	\$1.08	\$1.156	\$1.182	↔	Hold	1.08
ABUK.CA	ABU QIR FERTILIZERS /d	49.99	46	43.66	51	54	↔	Hold	43.66
HRHO.CA	EFG HERMES HOL/d	17.33	16.7	16.25	18.1	18.9	↔	Hold	16.25
FWRY.CA	FAWRY FOR BANKING TECHNOLOGY /d	5.84	5.47	5.15	5.85	6.15	↔	Hold	5.15
MFPC.CA	MISR FERTILIZERS PRODUCTION CO	181.97	170	164	185	195	↑	Hold	164
TMGH.CA	TALAT MOSTAFA/d	9.17	8.8	8.55	9.16*	9.5	↔	Hold	8.55
EKHOA.CA	EGYPT KUWAIT HOLDING CO	43.56	42	40	45	47	↑	Hold	40
SWDY.CA	ELSWEDY ELECTR/d	17.47	16.4	15.6	17.8	18.9	↑	Hold	15.6
ETEL.CA	TELECOM EGYPT/d	24.5	23.4	22.5	24.7	27.5	↔	Hold	22.5
CIRA.CA	CAIRO FOR INVESTMENT AND REAL ESTATE	9.89	10.02*	9.65	11.2	12	↓	P.Sell	12
MNHD.CA	NASR CITY HOUSE/d	3.57	3.4	3.25	3.67	4.03	↔	Hold	3.25
AMOC.CA	ALEXANDRIA MINERAL OILS CO/d	10.18	9.5	8.9	10.25	10.8	↑	Hold	8.9
CIEB.CA	CREDIT AGRICOL/d	10	9.6	9	10.5	11.08	↔	Hold	9
EFID.CA	EDITA FOOD INDUSTRIES	16	15	14.4	16*	17.5	↔	Hold	14.4
CLHO.CA	CLEOPATRA HOSPITAL	4.49	4.35	4.2	4.7	4.95	↔	Hold	4.2
SKPC.CA	SIDI KERIR PET/d	22.99	21.7	20	23	24.2	↑	Hold	20
ESRS.CA	EZZ STEEL/d	42.13	38.5	35.5	42.5	44	↑	Hold	35.5
JUFO.CA	JUHAYNA FOOD INDUSTRIES	13.29	12.5	11.8	13.5	13.85	↑	Hold	11.8
HELI.CA	HELIOPOLIS/d	10.1	9.77	9	10.8*	11.6	↔	Hold	9
TALM.CA	TAALEEM MANAGEMENT SERVICES	3.33	3.2	2.87	3.46	3.7	↓	P.Sell	3.46
ADIB.CA	ABU DHABI ISLAMIC BANK EGYPT	20.88	20.3	18.75	22.3	23	↑	Hold	18.75
ORAS.CA	ORASCOM CONSTRUCTION	102	95	90	108	114	↔	Hold	90
CCAP.CA	CITADEL CAPITA/d	2.22	2.09	1.96	2.33	2.47	↔	Hold	1.96
RMDA.CA	TENTH OF RAMADAN FOR PHARMACEUTICAL	2.18	2.1	1.985	2.32	2.43	↔	Hold	1.985
PHDC.CA	PALM HILL DEV /d	2.01	1.9	1.83	2.06	2.14	↔	Hold	1.83
ORWE.CA	ORIENTAL WEAVERS /d	16.71	15.25	14.2	16.98	17.7	↑	Hold	14.2
ISPH.CA	IBNSINA PHARMA/d	1.493	1.41	1.31	1.55	1.66	↔	Hold	1.3
AUTO.CA	AUTO GHABBOUR /d	5.79	5.45	5.15	5.8	6.12	↔	Hold	5.15

## Guidelines



**Bullish**



**Bearish**



**Neutral**

Trend: (Upgrade, Downgrade): Change in trend color refers to upgrade or downgrade in the trend relative to the previous trend direction. E.g. change from “↓ Down” to “↔ Flat” is considered an upgrade and vice versa.

**Buy:** Buy the full position.

**P.Buy:** Buy portion of a position

**Hold:** Don't Buy or sell.

**P.SELL:** Sell portion of a position.

**Sell:** Sell the full position.

**Stop Loss:** Completely exit the position (or) Re-entry in cases of Selling.

## Disclaimer

This report has been prepared according to the general data available for public, in accordance with the professional standards applied in that career to the best knowledge of the reporter. The recommendations mentioned are a guiding tool representing a professional opinion, and not granting any profits, consequently it is not obligatory for our valued customers and investors. Pioneers Securities©, Egypt shall not be liable for any direct, indirect, incidental, or consequential damages, including limitation losses, lost revenues, or lost profits that may result from these materials. Republishing this report or any of its contents is subject to prior approval; referring to the source is a must. Opinions expressed are subject to change without notice and may differ or be contrary to the opinions or recommendations of Pioneers Securities©, Egypt Research or the opinions expressed by other business areas or groups of Pioneers Securities©, Egypt as a result of depending solely on the historical technical behavior (price and volume).

## Technical Analysis Department

### **Saleh Nasser**

Chief Technical Strategist

### **Ahmed Hassan**

Senior Technical Analyst

### **Dina Fahmy**

Senior Technical Analyst

### **Tips on reading the report**

The first page includes an analysis of two major indices in the Egyptian Stock Market; the norm is that we will analyze both the EGX 30 and 70, but sometimes we will compare the EGX 30 to its 50 counterpart if there is important information in this comparison. We also use the Hermes Last Index interchangeably with the EGX 30. The .HRMSL index has an important edge; it uses last prices instead of VWAP. First thing our clients should do is to read the indices analysis carefully to have a clear understanding on our overall view.

The second page includes stocks that broke out beyond their resistance levels, and those that violated their support levels. It also includes stocks that are testing their support levels and those that are testing their resistance. This analysis is important and it is the core of our recommendations. It is important to note though that not all stocks that are testing their support levels are bullish, and not all that are testing their resistance levels are bearish. To make it easier for our clients, we have placed a bull face 🐮 if we consider the stock under study bullish, and a bear face 🐻 if we consider it bearish. We also added a big bullet 📌 if we are neutral.

It is important to note that you might find a stock that we consider bullish in our analysis (in the breakouts/testing section) but it remains as a hold or partial sell in the table. The conflict here is that the table is more conservative. This will not be an issue with our clients, because our analysis will explain why we are being bullish/bearish on the stock.